



Te Kāwanatanga o Aotearoa
New Zealand Government

Te hau mārohi ki anamata Ki te ōhanga whakaputa, toitū, e whai wāhi ai te katoa

TE MAHERE WHAKAHEKE TUKUNGA
TUATAHI A AOTEAROA

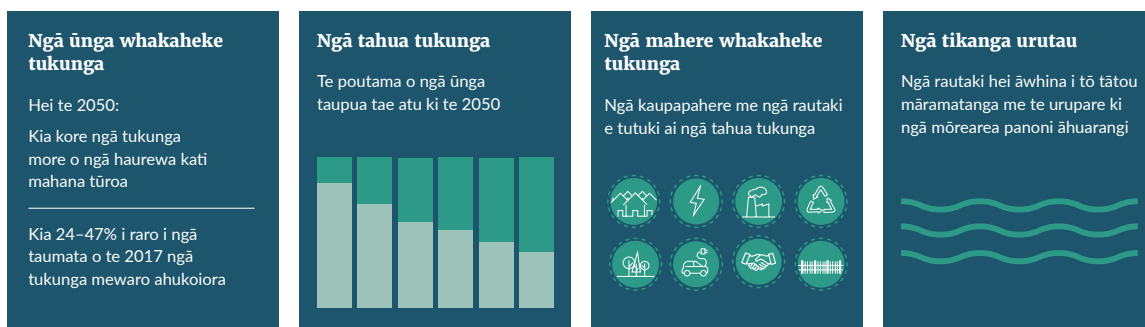
HE PAKU TIROHANGA ATU



Tō tātou haere ki te ōhanga whakaputa me te toitū e whai wāhi ai te katoa

He whai wāhitanga hira te whakaumu ki te ōhanga tukunga-iti ki te whakapai ake i tō tātou taurikura ohaoha, te whakaheke i te utu noho, te whakaora i te taiao tūturu, te whakakore i te ōritenga kore me te whakapai ake i ngā paerewa noho mō ngā tāngata katoa o Aotearoa. He haumitanga te whakamauru huringa āhuarangi ki ngā mahi e nui atu ai te utu kaimahi, ki ngā pakihi e nui atu ai ngā whakaputaranga, me ngā ara tukutuku pakari.

Ko tā te mahere whakaheke tukunga he whakatakoto i ngā āhua e whakaheke ai a Aotearoa i tō tātou pāpānga ki te āhuarangi



Mā te mahere whakaheke tukunga e whāia ai e Aotearoa te ara ki te whakatutuki i ā tātou ūnga pae tawhiti me te whai wāhi ki ngā mahi ā-ao ki te whakatiki i te pikinga pāmahana ki te 1.5°C i runga ake i ngā taumata i te wā o te whananga ahumahi. Mā ngā mahi o tēnei mahere e āhei tātou ki te whakatuki i tā tātou tahua tukunga tuatahi. Ka hiahia tērā kia whakaheke a Aotearoa i ā tātou tukunga mā tētahi ōritenga ki ngā mekatana 11.5 tāpiri (Mt CO₂-e) i waenga i te 2022 me te 2025. Koinei te ōritenga tukunga o tōna 4.3 ki te 5.5 miriona waka whai pūkaha koranehe e taraiwa ana i te 10,000 kiromita ia tau.

Ko tā te mahere he whakawhānui i ngā mahi kua oti kē ki te whakamauru i te huringa āhuarangi, tae atu ki:

- ▶ te whakamana i te Ture Menamena Urupare Panoni Āhuarangi (Waro Kore) 2019
- ▶ ngā whakahoutanga matua ki te Kaupapa Hokohoko Tukunga o Aotearoa
- ▶ te kati i ngā rapu koranehe hou i te takere moana
- ▶ te whakarite kia eke i te rāngai tūmatanui te tukuwaro koretanga ā te 2025

- ▶ ngā whakahoutanga ahumoni toitū pērā i te whakamana i tētahi ture pūrongo āhuarangi he tuatahitanga i te ao, te huri i ngā kaiwhakarato Kiwisaver taunoa me te whakatū i te New Zealand Green Investment Finance
- ▶ tētahi haumitanga matua ki te tūnuku tūmataiti me te rerewē, me ngā kaupapa whakatenatena i a ngāi Aotearoa kia hoko waka tukuwaro-iti (hei tauira, te Whakahekenga Utu mō ngā Waka Tukuwaro-iti).

Kei te whakatakoto mahere te mahere mā tātou katoa e whakatinana. Mā te mahi ngātahi ka taea he āpōpōtanga pai ake mō ngā tāngata katoa o Aotearoa.

Te whakaiti i ngā utu noho me te tautoko kāinga kia taurikura ai

Mā te otinga o ngā mahi ki te whakamauru i te huringa āhuarangi e nui ake ai te taurikura o ngā tāngata o Aotearoa. Ka whakarato te whakaumu ki te ōhanga tukuwaro iti i te whai wāhitanga ki te whakaiti i te utu noho me te whakapai ake i ngā paerewa noho i Aotearoa.



TE WHAKANUI AKE I TE WĀTEA KI NGĀ KŌWHIRINGA TŪNUKU TOITŪ, TAREKA Ā-UTU HOKI

Ka āwhina te mahere whakaheke tukunga i a tātou ki te whakarere i te koranehe me te whakaiti i tō tātou noho whakaraerae ki ngā māketē koranehe takahirihi ā-ao. Ka āwhina te kāwanatanga i ngā ngā kāinga kia whakaiti i ō rātou tukanga tūnuku mā te whakarato i ngā kōwhiringa tūnuku toitū, ngāwari te utu, tae atu ki:

- ▶ te whakarite kia haere tonu te Whakahekenga Utu mō ngā Waka Tukuwaro-iti mā te āwhina i ngā tāngata o Aotearoa ki te hoko mai i ngā waka tukuwaro-iti, tukuwaro-kore hoki, me te whakaiti i ā rātou utu kora me te tautiaki waka
- ▶ te whakanui ake i ngā wāhi whakahiko waka puta noa i Aotearoa kia taea ai e ngā tāngata katoa o Aotearoa ō rātou waka te whakahiko ina hiahiatia
- ▶ te whakangāwari ake i te utu mō ngā waka tukuwaro-iti, ngā kōwhiringa tukuwaro-iti rānei, ki ngā kāinga kei reira te iti o te moni whiwhi mā tētahi kaupapa whakawātea-ka-whakakapi
- ▶ te whakanui ake i ngā kōwhiringa hāereere me te wātea ki ēnei mā te whakarato i ngā pahī me ngā tereina he nui ake te haratau, te ngāwari o te utu, me te pūputu ki ngā tāngata, me ngā arahikoi, ngā ara paihikara haumarua ake anō hoki.

Mā ngā mahi pēnei e para te huarahi hei whakarite kia tukuwaro-kore te 30 ōrau o ngā waka māmā (motukā, wēne, taraka iti), ka mutu, kia whakaiti i te tapeke kiromita e haerea ai i ngā waka māmā mā te 20 ōrau ā te 2035.



TE TAUTOKO I NGĀ KĀINGA TAREKA Ā-UTU, HAUORA ME TE TOITŪ

Mā mātou e whakapiki tō tātou hauora me te taurikura mā ngā kāinga hauora ake me ngā hāpori toitū mā te:

- ▶ āwhina ā-pūtea i ngā whare kei reira te iti te o te moni whiwhi ki te whakamahana whare me te whiwhi whakamohoaanga ārai makariri mā te kōkiri Warmer Kiwi Homes
- ▶ whakapai ake i ngā paerewa ārai makariri kia mahana ake ai, kia maroke ake ai ngā whare hou, ka mutu ka whakamahi i te pūngao e 40% te iti iho mō te whakamahana
- ▶ whakapai ake i ō tātou taiao ā-tāone me te whakanui ake te maha o ngā whare me te tareka ā-utu (mā te whakahoutanga Whakahaere Rawa, te aronga o ngā kaupapahere whakawhanake ā-tāone, me ngā haumitanga tūāhanga)
- ▶ tuku pūtea me te tautoko i te hanga pūngao whakahou, tae atu ki te Māori and Public Housing Renewable Energy Fund.



TE WHAKAMĀMĀ I TE WHAKAITI PARAROPI ME TE WHAKAHAERE I RUNGA I TE HAEPAPA

Mā te Kāwanatanga ia whare e tautoko ki te whai wāhi mai, me te whakamāmā i te whakaheke pararopi mā te:

- ▶ tautoko kāinga me ngā pakihi ki te ārai para kai
- ▶ whakanui ake i te kohinga paeara o ngā para kai, kia āhei ai te nuinga o ngā whare ki tētahi ratonga kohikohi para kai ā te 2030
- ▶ haumi ki te tūāhanga whakahaere para pēnei i te whakawairākau me ētahi atu rawapuni mō te tukatuka pararopi me te taumanu rawa.



Te hanga i tētahi Aotearoa taurikura mā ngā hokonga whakawaho he nui te uara, me te whai i ngā aronga hou

Ko tā te mahere he whakakaha i tō Aotearoa ingoa hei kaiwhakarato hua mā, kākāriki me te haumaru.

E ū ai ki ngā kawatau a ngā kiritaki huri noa i te ao, me mātua whakaiti i te tapuwae waru, hauropi anō hoki, me te hangahanga tonu i ngā whai wāhitanga hou mō te hoko whakawaho - inarā mō ō tātou ahumahi kai me te kaka.

Te whakapakari i tō tātou ingoa hei kaiwhakanao toitū o ngā kai me te kaka i te ao



Mā ngā maha o te mahere e whakarite kia noho a Aotearoa hei kaiwhakarato kai tino toitū rawa o te ao. Ka tutuki tēnei i:

- ▶ te whakapoapoa kaipāmu kia whakaheke i tō rātou pāpātanga ki te āhuarangi mā te noho hei tuatahitanga i te ao mō te whakauru i tētahi utu ki ngā tukunga ahuwhehua atu i te 2025.
- ▶ te whakatū i tētahi Pokapū Panoni Āhuarangi Whakaiti Tukanga Ahuwhehua hei whakaterere i te whiwhinga utauta, ritenga me ngā hangarau whakaheke tukunga i runga pāmu
- ▶ te mahi i te taha o ngā kaipāmu me ngā ratonga tohutohu, toronga hoki ā-pāmu e aro ana ki te āhuarangi
- ▶ te tuku pūtea ki ngā hōtaka ahuwhehua aro ki ngā tikanga hei tautoko i ngā wawata o ngāi Māori
- ▶ te whakapiki i te uara o tō tātou rāngai ahurākau mā te tautoko i ngā hua tukunga-iti me te whakaterere ake i te mākere pūngaokoiora.



Te whakanui whakaputaranga me te whakarite kia nui ake tō ngā pakihī kaha ki te whakahaere i tā rātou whakamahi pūngao me ngā utu pātahi

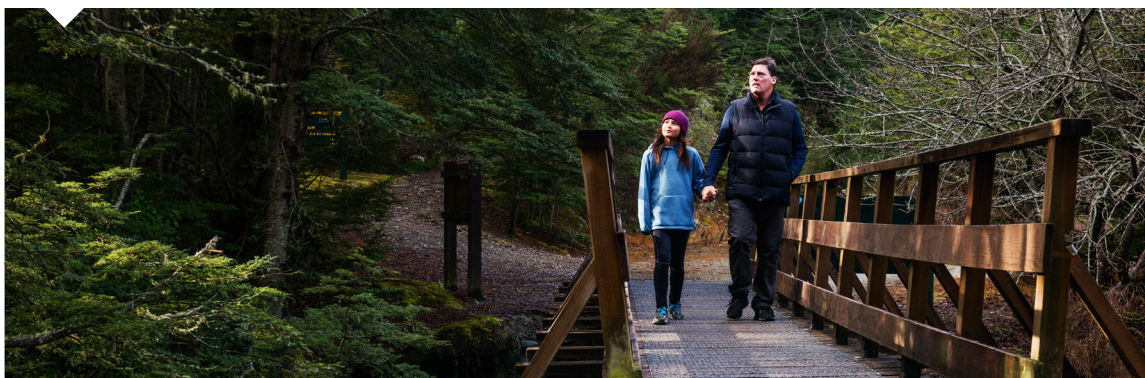
Mā te whai i ngā hangarau mā me te whakapiki i te toitūtanga e nui ake ai te whakaputaranga o ō tātou ara tukutuku, ahumahi anō hoki. Kei roto i tēnei ko te neke ki ngā mahi whakanao, te kawekawe utanga me ngā ratonga manurere e iti ai ngā tukunga.



Ka whakaahei te Kāwanatanga i ngā ara tukutuku toitū mā te:

- ▶ tautoko i ngā pakihī ki te whakakaha ake i te whāomotanga pūngao, te whakaiti utu, me te whakawhiti i ngā koranehe ki ngā kōwhiringa tukunga-iti kē mā te whakarite kia haere tonu [ngā kaupapa pakihī](#) a Te Tari Tiaki Pūngao me te whakawhānui i te [Haumitanga ki te tahua Whakaheke Tukunga Waro](#) a te Kāwanatanga
- ▶ aukati i ngā kura paera hou pāmahana iti, pāmahana wera hoki e tahutahu waro koranehe ana, me ngā mea o nāianeī hoki, mā te 2037
- ▶ whakawhanake i te mahere whakawhiti haurehu ki te para i te huarahi mō te wehe atu i ngā haurehu koranehe me te tūhurahura whai wāhitanga whakamahi haurehu whakahou
- ▶ whakarite kia whakahekea ngā tukunga mai i te tūnuku kawē utanga mā te 35 ōrau ā te 2035 mā ngā kōkiri pērā i te Herenga Korakoiora Toitū, te tautoko i te nui ake o ngā taraka tukunga-kore me te whakaahei i te kawenga ā-kaipuke warokore i ngā ara tauhokohoko matua
- ▶ mahi tahi ki te rāngai tūmataiti ki te whakatere i te whanaketanga o te mākete pūngaokioira o Aotearoa
- ▶ te whakaahei i ngā mahi tāpoi me ngā ahumahi hoko whakawaho e toitū ana pēnei i te Rangapū Kora Rererangi Toitū ki a Air New Zealand.

Ka tautoko anō hoki te mahere i te whanaketanga o ngā ahumahi hou pērā i te hauwai kākāriki me te ōhanga koiora, ka mutu, ka whāia e Aotearoa te ara ki te ōhanga āmiomio ā te 2050.



Te whakatinana i ngā kōkiritanga me te hangarau hei whakaheke tukunga me te whakapai ake i ngā paerewa noho

Mā te hangarau hou a Aotearoa e tuku kia whakaheke tukunga, whakapiki i te whakaputaranga me te whakapai ake i ngā paerewa noho o te katoa.

Kua wātea kē ngā hangarau tukunga-iti hei āwhina i tō tātou panoni, ā, kei te tautoko te Kāwanatanga i ngā kaihangā auaha kia whakawhanake i ētahi atu anō.

E wātea ana hoki ki a tātou ngā whakatupuranga maha o te mātauranga taketake hei ārahi i tā tātou whakawhiti ki te ōhanga tukunga-iti. Ka whakamana te kaupapahere [Vision Mātauranga](#) a te Kāwanatanga i te pūtaiao me te pūmanawa auaha o te mātauranga Māori me te tirohanga torowhānui ā-ao e noho pū ai te taiao ki ngā kōkiritanga hangarau.



E āki kē ana te Kāwanatanga kia nui ake te auahatanga o Aotearoa ki anamata mā tana haumitanga \$800 miriona ki te rangahau e pā ana ki te āhuarangi, te pūtaiao me te auahatanga.

- ▶ E tautoko ana te kaupapa [whakaaturanga hangarau](#) a Te Tari Tiaki Pūngao i ngā pakihi kia ū ki ngā hangarau pakari, ngā whakapainga tukunga auaha rānei.
- ▶ Kei te tautoko te pūhara Hangarau Pūngao Whatutoto a te Kāwanatanga i ngā hangarau tērā ka tino panoni rawa i te ao pūngao me te whakawhanake i ngā whai wāhitanga hokohoko.

Ka whakahuihui ngā pūhara auahatanga āhuarangi i ngā kaihangā auaha ā-motu, ā-ao hoki, ngā kāwanatanga, ngā rakahinonga me ngā mātanga ki te tūhurahura me te whakatinana i ngā hangarau mā hou.

Te whakarei i te taiao tūturu i ngā āhuatanga katoa o tō tātou ōhanga me ō tātou anō ao

Ka rokiroki waro ō tātou ngāherehere me ngā tipu māori, ka whakakaha i tō tātou aumangea ki ngā pāpātanga o te panoni āhuarangi, ka mutu ka hāpai i tō tātou rerenga koiora me te toiora. Kei te uho te tiaki, te whakarei me te whakaora i te taiao tūturu o tā mātou urupare ki te mōrearea āhuarangi me te rerenga koiora.



Kei roto i ngā mahi matua hei tautoko i ngā rongoā ko te taiao te pūtake ko ēnei:

- ▶ te whakatītina i te nui ake o te whakatō ngahere rākau māori hei hanga i te putunga waro wā roa (e tangohia ai te waro hāora-rua i te hau takiwā) ka toko i te rerenga koiora
- ▶ te whakaiti i ngā utu ki te whakaora i ō tātou ngahere māori me te whakatinana i te patu kīrearea tērā ka āwhina i ō tātou pūnaha rauropi kia tōnui, me te aha ka tangohia te nui ake o te waro
- ▶ te tiaki i ō tātou otaota māori me te waro e rokiroki ana i roto i ngā pāpānga o te panoni āhuarangi
- ▶ te whakaarotau i ngā rongoā e pūtakea ana i te taiao, pērā i ngā tāhuahua kirikiri me ngā kūkūwai, te tango me te rokiroki waro me te whakapūmau parenga ki te waipuketanga me ngā tai moana piki.

Te whakamana i te panoni mana ōrite mō te Māori, mā te Māori e arataki

Ko tā mātou he whakarite i te panoni mana ōrite mō te Māori, mā te Māori e arataki ki te hāpai i ngā motika me ngā pānga Māori i raro i Te Tiriti o Waitangi. E tutuki ai te panoni mana ōrite, me whakapakari i ngā hononga Māori–Karauna kaha, kia taea ai te koke i ā mātou mahi urupare hei hoa pātui.

Mā taua mahere me mahi ngātahi te Māori me te kāwanatanga ki te:

- ▶ whakawhanake i te pūhara hou mō tā te Māori whakamauru huringa āhuarangi e āhei ai te tangata whenua kia āta whai wāhi ki te urupare āhuarangi
- ▶ whakawhanake i tētahi rautaki āhuarangi me te mahere mahi ka mairangi i te ao Māori me te mātauranga Māori i roto i te whānuitanga o ngā urupare ki ngā panoni āhuarangi
- ▶ whakarite i te tahua me ngā rauemi e tika ana mō ngā mahi ā-hapori, ngā kaupapa Māori, me ngā mahi me ngā rongoā ā-tangata Māori.

Ka whakarite te mahere whakaheke tukunga kia kua tētahi e mahue ki muri

Mo te taha ki taua whakawhitinga nei me whakaumu i ā tātou mahi puta noa i ēnei tau e 30 e tū mai nei. Me tautoko ngā kaimahi, whānau me ngā kāinga, ngā pakihi me ngā ahumahi, a ngāi Māori, ngā hapori me ngā ōhanga ā-rohe, me ngā hapori whānui ake puta noa i te roanga o taua wā o te panoni.

Kei roto i te mahere ngā mahi hei whakarite i te whakawhitinga mana ōrite, hei taurira:

- ▶ te whakarato mahi i ngā ahumahi tukunga-iti
- ▶ te tautoko i ngā rohe me ngā hapori ki te whakamahere i te whakawhitinga
- ▶ te whakahoa ki ngā rōpū huri noa i Aotearoa, tae atu ki BusinessNZ me Te Kauae Kaimahi ki te whakatutuki i ngā wero me ngā whai wāhitanga, ki te tautoko i te whakawhitinga mana ōrite
- ▶ te whakahou i te pūnaha mātauranga me te whakangungu ki te tautoko tāngata ki te whakawhanake i ngā pūkenga e hiahia ana mō te ōhanga tukunga-iti
- ▶ te tautoko whakawhiwhi mahi, tae atu ki te whakangungu anō, ngā whai wāhitanga whakarei pūkenga, me te āwhina ā-moni whiwhi ki te tautoko kaimahi me ngā kāinga.

Mā te Kāwanatanga ngā mahi e whakatauiria

I whakarewa te Kāwanatanga i tana Kaupapa Kore Waro a te Kāwanatanga (Carbon Neutral Government Programme (CNGP)) ki te whakamauru i te panoni āhuarangi me te whakahoro ake i ngā whakahekenga tukunga i roto i te rāngai tūmatanui.

Ko te whakarite o te CNGP kia tutuki i ētahi o ngā umanga rāngai tūmatanui te tukuwaro kore hei te 2025.

E taituarātia ana te CNGP e te Tahua Whakaheke Tukuwaro Rāngai Kāwanatanga, tērā ka haumi ki ngā kaupapa he tino nui rawa te pāpātanga ki te whakaheke tukunga. Kei roto i ēnei:

- ▶ te whakakapi i ngā kura paera tahutahu waro koranehe 12 nō te kāwanatanga e whakamahi tonutia ana
- ▶ te ū ki te whakakapi i ērā kura paera waro koranehe e toe ana i ngā kura (ko tōna 1800) hei te tau 2025
- ▶ te tuku pūtea tautokorua hei hoko mai i te takiwā o te 1,000 waka hiko, me ētahi atu kaupapa tukunga-iti.

Tō tātou haerenga ki te ōhanga whakauruuru, toitū me te whakauruuru: He hopuāhua

Ngā kāinga taurikura

NGĀ MEA KUA TĪMATA KĒTIA

- ▶ Kua tautokoruatia ā-pūtea koni atu i te 1,100 pūwhakahiko waka hiko (EV) huri noa i Aotearoa, me ētahi atu anō ā muri atu.
- ▶ Kua āwhina te mōkī Waka Mā ki te whakareatoru i ngā hokonga EV ā-marama.
- ▶ Kei te āwhina te kōkiri Warmer Kiwi Homes ki te utu i te whakamahana me ngā whakamohoatanga ārai makariri mō ngā kāinga kei reira te iti o te moni whiwhi.
- ▶ Te Tauākī Kaupapahere ā-Motu mō te Whakawhanaketanga Tāone hei tuku i te hanganga o ngā whare maha ake kia pātata ki ngā pokapū tāone me ngā ara ikiiki tere e kaha whakamahia ana.



NGĀ MEA KEI TE HAERE MAI

- ▶ Ka wātea ki te nuinga o ngā kāinga ā-tāone tētahi ratonga kohikohi parakai ā te 2030.
- ▶ Ka whai pūnaha hopu haurehu ngā ruapara ā-tāone katoa ā te 2026.
- ▶ Ka whaimana te whakaritenga kia tukunga kore ngā pahi tūmatanui ā te 2025.

Ō MĀTOU WHĀINGA

Ka whakahekea te tawhiti katoa ka haeretia e ngā waka māmā (ngā motukā, wēne, taraka paku) mā te 20 ōrau ā te 2035.

Ko te 30 ōrautanga o ngā waka he waka tukunga-kore ā te 2035.

Mā ngā paerewa ārai makariri kua whakapaitia ake e mahana ake ai, e maroke ake ai ngā whare hou, ka mutu ka whakamahi i te pūngao e 40% te iti iho mō te whakamahana.

Ngā pahi me ngā tereina tere ake, maha ake, haratau ake, ngā ara hīkoi me ngā ara pahikara haumarua ake puta noa i ō tātou tāonenui.



Te taiao tūturu kua whakareia

NGĀ MEA KUA TĪMATA KĒTIA

- ▶ Koni atu i te 5,000 ngā mahi hou e aro ana ki te taiao, me te tautoko mō te onoono rākau me te whakaora pūnaha rauropi.
- ▶ Kei te whakatinanahia te Rautaki Rerenga Rauropi o Aotearoa puta noa i te whenua.



NGĀ MEA KEI TE HAERE MAI

- ▶ Kua mārō te haere o te whakamahere ahurākau whakarei me ngā ratonga tohutohu hāngai ā te 2023.
- ▶ Ka whakanuitia ake te maha, kua whakahekea anō hoki te utu, o ngā wana rākau māori mā te hangarau pai ake me ngā mahi whakahaere pai ake.
- ▶ Ka whakamahi te Kaupapa Kore Waro a te Kāwanatanga i ngā ngahere māori hei āwhina ki te whakataratahi tukunga atu i te tau 2025.

Ō MĀTOU WHĀINGA

Kia nui ake te whakatō ngahere rākau māori hei hanga putunga waro wā roa e whai hua ai te rerenga rauropi.

Ka whakamahia ngā rongoā aro ki te taiao hei whakarato whakamarutanga i ngā pāpānga o te waipuketanga.

Ka parea ō tātou ngahere māori me te waro e rokia ana i roto i ngā pāpātanga o te panoni āhuarangi.

Ngā hokonga whakawaho he nui te uara, me te aronga hou



NGĀ MEA KUA TĪMATA KĒTIA

- ▶ He Waka Eke Noa, he rangapūtanga i waenga i te kāwanatanga, te rāngai ahumahi me ngāi Māori ki te whakawhanake i tētahi pūnaha utu mō ngā tukunga ahuhenua, me te whakarite kia takatū ngā kaipāmu mō taua panoni.
- ▶ Kua whakapūmau te haumitanga tata ki te \$200 miriona ki te rangahau tukunga ahuhenua i te papa taunakitanga mō ngā utauta whakamauru me ngā hangarau hou, te āheinga me te hautūtanga ā-ao.

NGĀ MEA KEI TE HAERE MAI

- ▶ Te whakatū i tētahi Pokapū Panoni Āhuarangi Whakaiti Tukanga Ahuhenua hei whakaterere i tā ngā kaipāmu whiwhinga utauta, ritenga me ngā hangarau whakaheke tukunga.
- ▶ Te whakaoti i tētahi whakamātau mō ngā mahi kaute ā-pāmu me te pūrongorongo tukanga ā te 2023.
- ▶ Ka whakaritea he utu mō ngā tukunga ahuhenua atu i te 2025.
- ▶ Ka whai pūrongo tukunga ngā pāmu katoa hei te mutunga o te 2022 me ngā mahere whakamauru hei te 2025.

Ō MĀTOU WHĀINGA

Ko Aotearoa tētahi o ngā kaiwhakanao tino toitū rawa o ngā kai me te kaka i te ao.

Ka taea e ngā kaipāmu ngā hangarau whakamauru whatutoto ka tautoko i ō tātou pūnaha pāmu kararehe.

He 10 ōrau te iti iho o ngā tukunga mewaro ahukoiora mai i ngā mahi ahuhenua ā te 2030, me te 24-47 ōrau te iti iho ā te 2050 (ina whakatauritea ki ngā taumata o te 2017).



NGĀ MEA KUA TĪMATA KĒTIA

- ▶ Te haumitanga tautokorua o ngā miriona tāra ki te whakaheke tukunga waro ahumahi me te whanaketanga ohaoha.
- ▶ Te pūrongo whakature i ngā mōrearea e pā ana ki te āhuarangi mā ngā kamupene tuku hea me ngā pūtahitanga ahumoni.
- ▶ Te New Zealand Green Investment Finance hei whakaterere ake i te haumitanga kia noho waro iti a Aotearoa ā muri atu.
- ▶ Te kati i ki te rapu koranehe hou i te takere moana.

NGĀ MEA KEI TE HAERE MAI

- ▶ Te tāmata i Te Tiriti, te mātauranga Māori, me ngā wawata o te Māori ki tā mātou pūnaha aronga hou mō te pūtaiao me te rangahau mā tā mātou kaupapahere Vision Mātauranga.
- ▶ Te whakapiki i te whakapau moni ki te rangahau me te whakawhanake puta noa i Aotearoa ki te 2 ōrau o te tapeke wāriu hokonga (GDP) ā te 2030.
- ▶ Te whakamahi pūhara kōkiritanga mō te āhuarangi hei uruhi i te kitenga me te whakamahinga o ngā hangarau mā hou.
- ▶ Te whakawhanake i tētahi rautaki pūngao ā mua i te paunga o te 2024.



Ō MĀTOU WHĀINGA

He ōhanga āmiomio tō Aotearoa e taurikura ai te ōhanga koiora hei te 2050.

Kei te ahua mai te haurua o te pūngao e whakamahi ana tātou i ngā rauemi whakahou ā te 2035.

Ka whakaputa te komokomo mātauranga Māori i ngā mahi whakatau pai ake i te roanga atu o te urupare ki te panoni āhuarangi.



Ministry for the
Environment
Manatū Mō Te Taiao



Te Kāwanatanga o Aotearoa
New Zealand Government

He mea whakaputa e te Manatū Mō Te Taiao
Pipiri 2022
INFO 1068